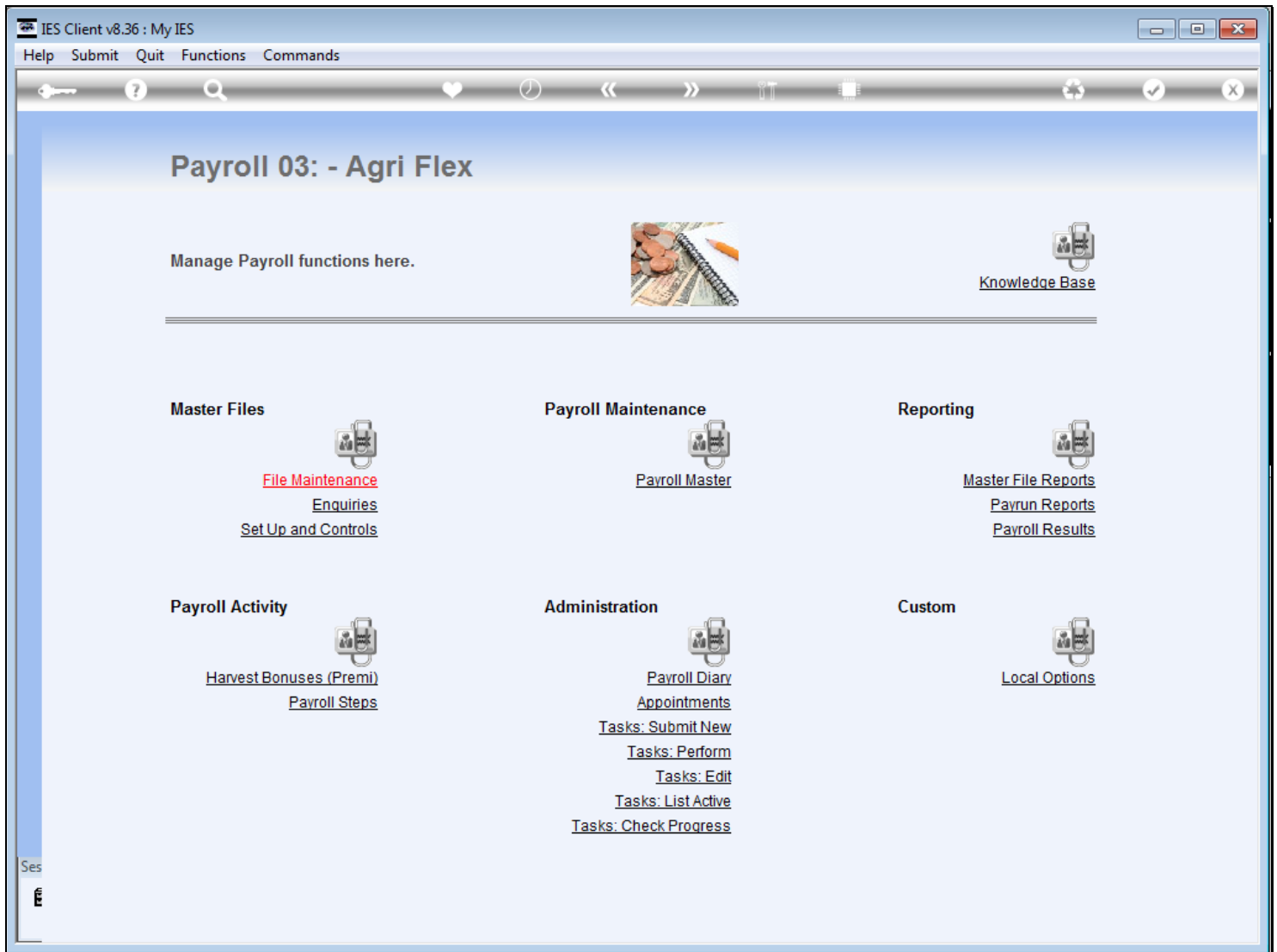


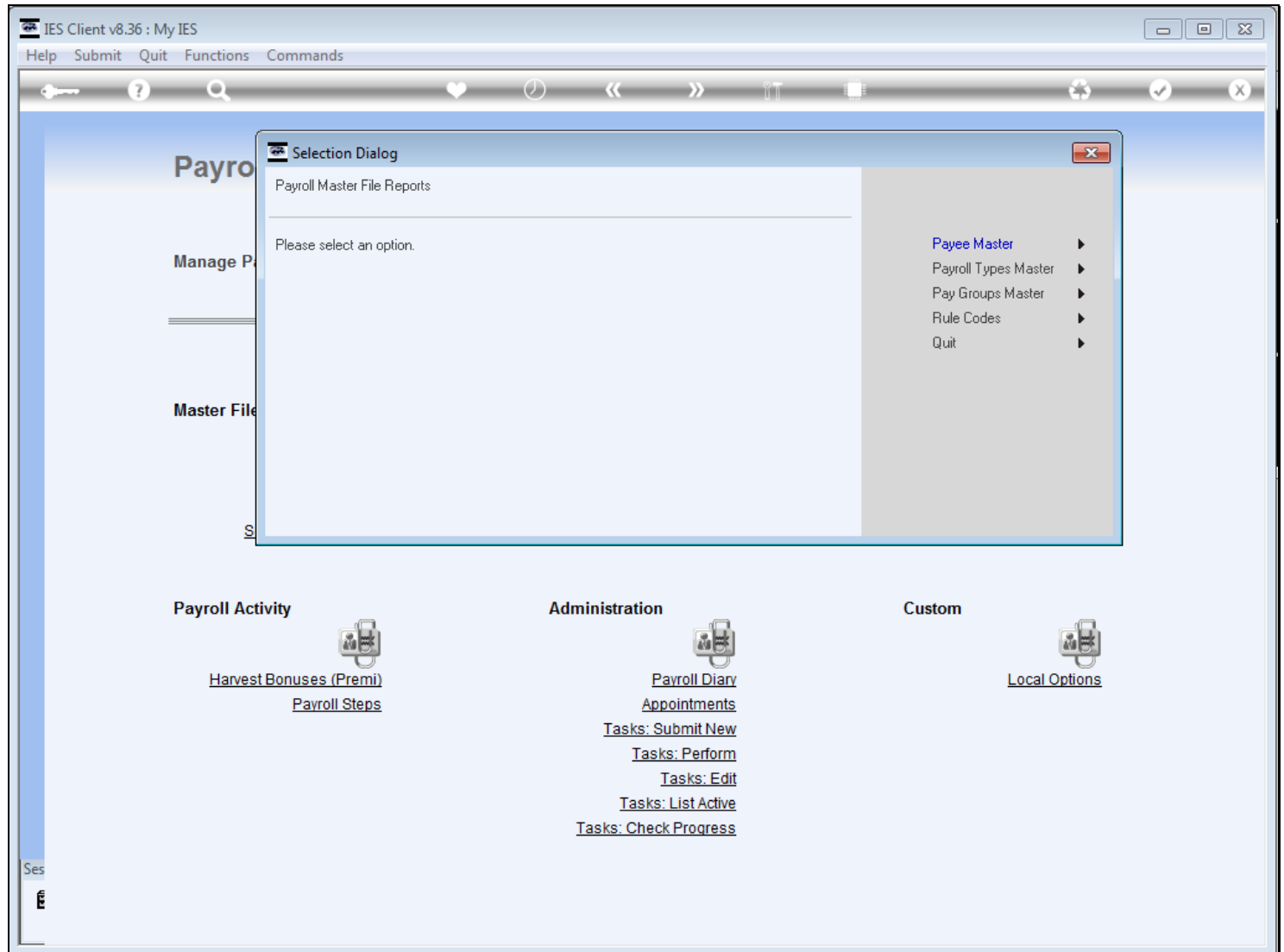
Slide 1 - Slide 1



Slide notes

Let us do an introduction to the Payroll Reports for the Agri Flex Payroll.

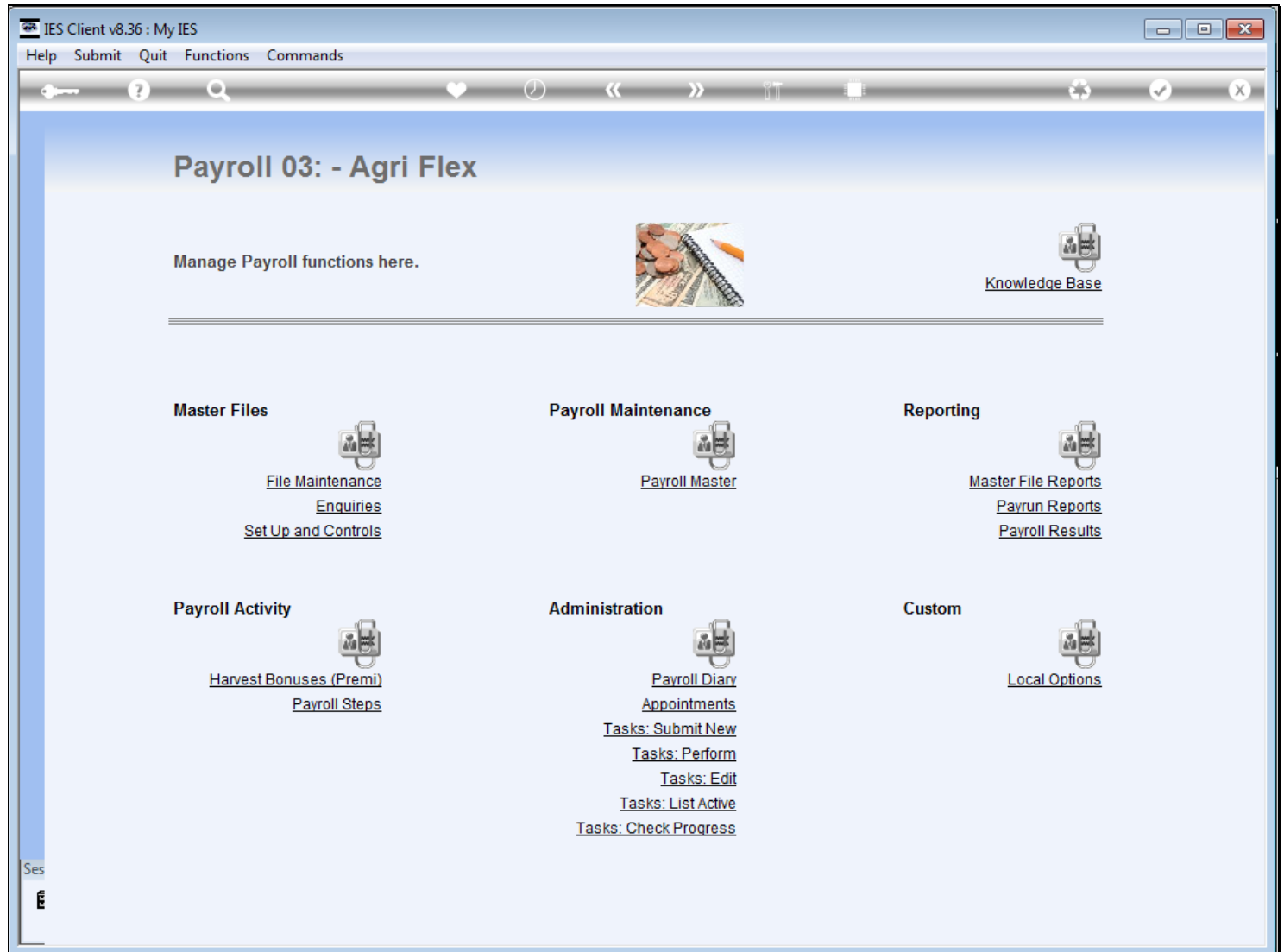
Slide 2 - Slide 2



Slide notes

At Master File Reports, we have options to list the various Master Files, including the Employees on the Payroll. We can also list the Payroll Types in our system, the Pay Groups, and the Rule Codes.

Slide 3 - Slide 3



Slide notes

Slide 4 - Slide 4

IES Client v8.36 : My IES

Help Submit Quit Functions Commands

IES REPORTS AND QUERIES: -

User Instructions

Name PAYROLL RULE LOGIC MASTER

a) CHOOSE VERSION [Versions](#)

Report Version System Version: Payroll Rule Logic Master

b) CHOOSE SETTINGS

Format report

OutPut FILE

File Type htm html file

Template 04: Infolab

Report Header Payroll Rule Logic Master

c) CHOOSE DATA SELECTOR [Change Selector](#)

Data Selector payroll105-03 PAYROLL RULE LOGIC MASTER

d) Review Selection (if prompts are present) [How to define MY CHOICE](#) [Restore Defaults](#)

Selection Tip	My Choice
1	

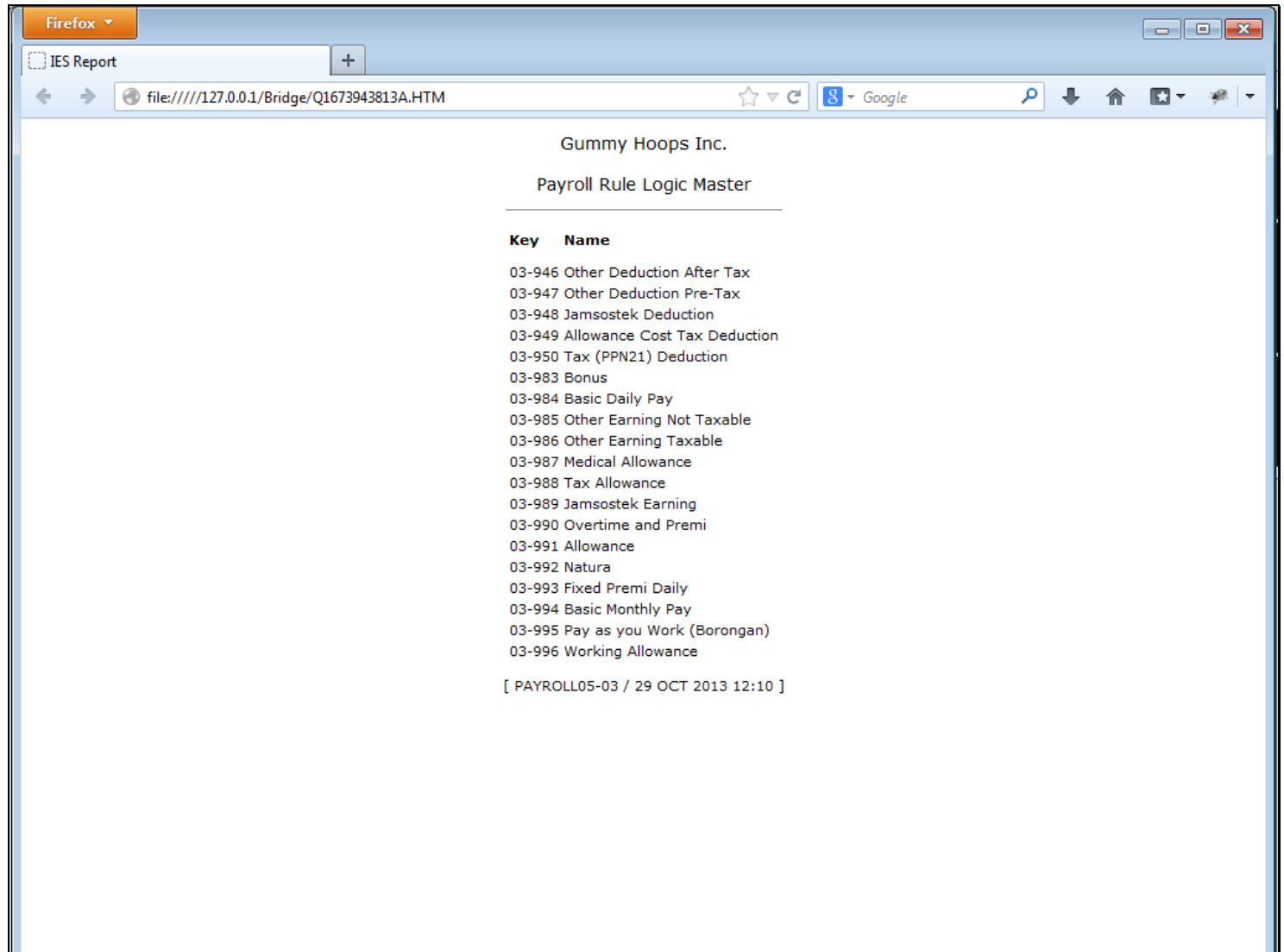
[Nex](#) [Pre](#) [Add](#) [Ins](#) [Ed](#) [Del](#)

e) Record Select: ☐ OPEN Records only ☐ CLOSED Records Only ☒ EITHER

f) Choose 'next' [Next](#)

Slide notes

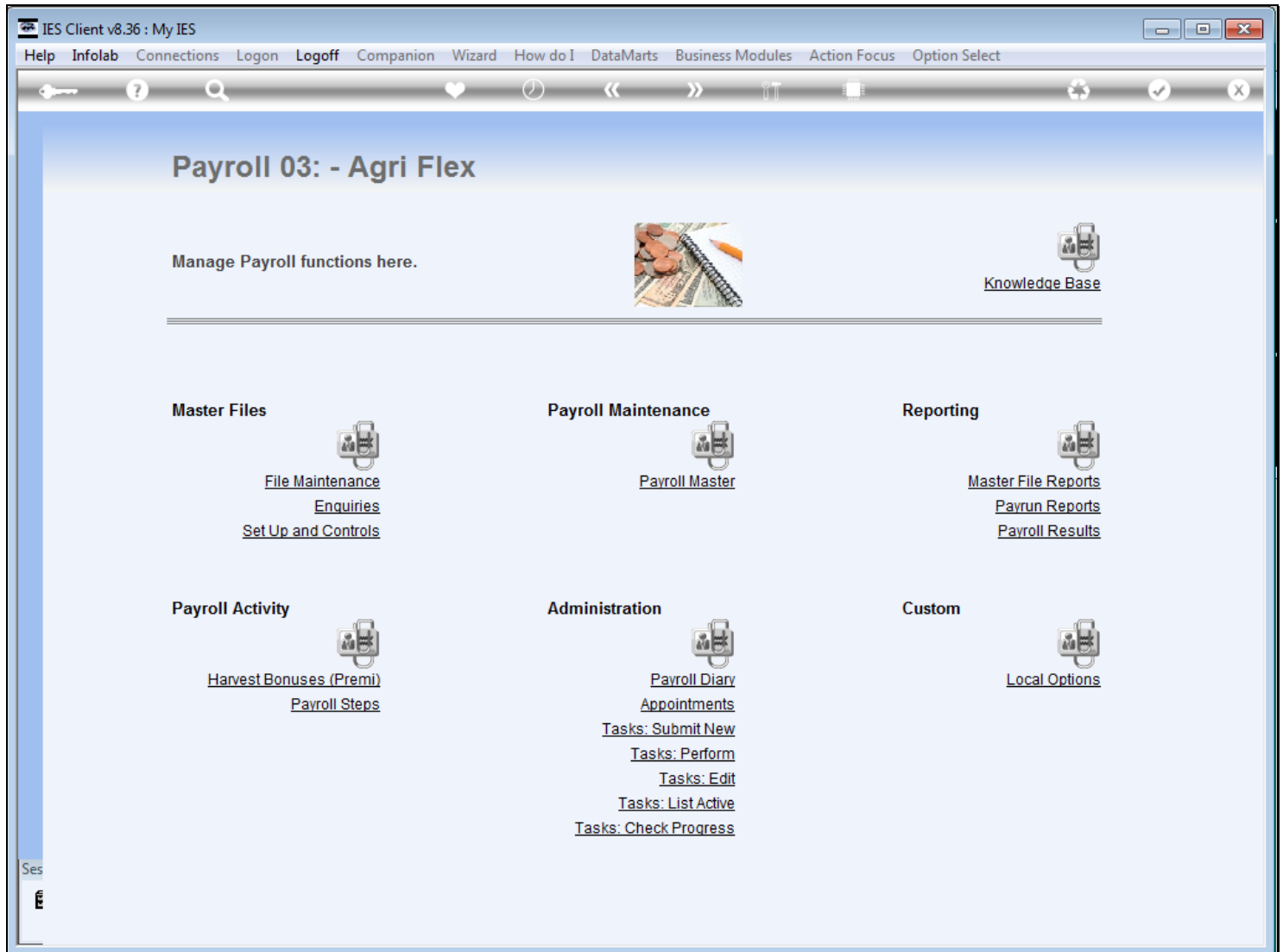
Slide 5 - Slide 5



Slide notes

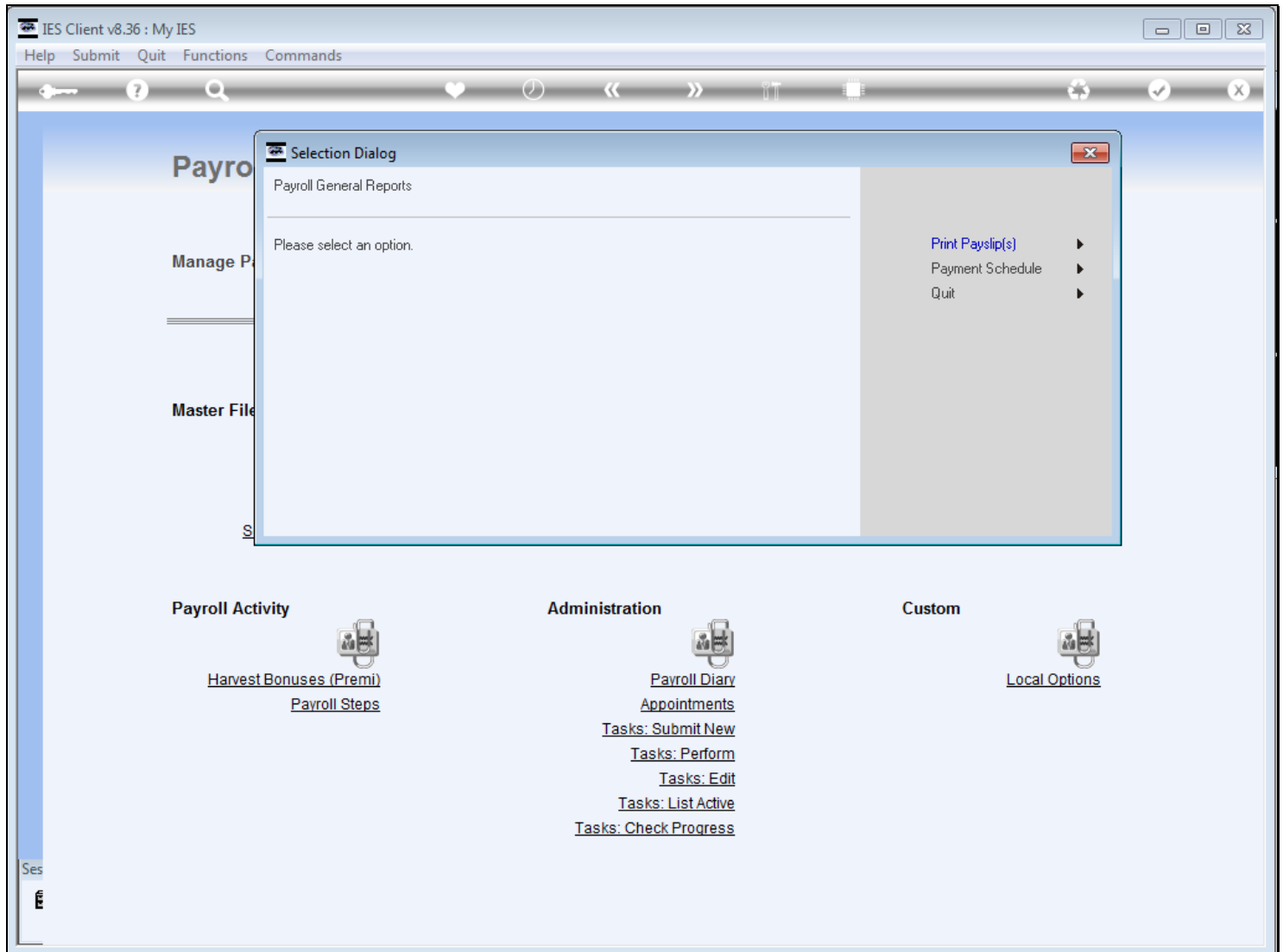
These are the Pay Rule Codes that are available in this Payroll.

Slide 6 - Slide 6



Slide notes

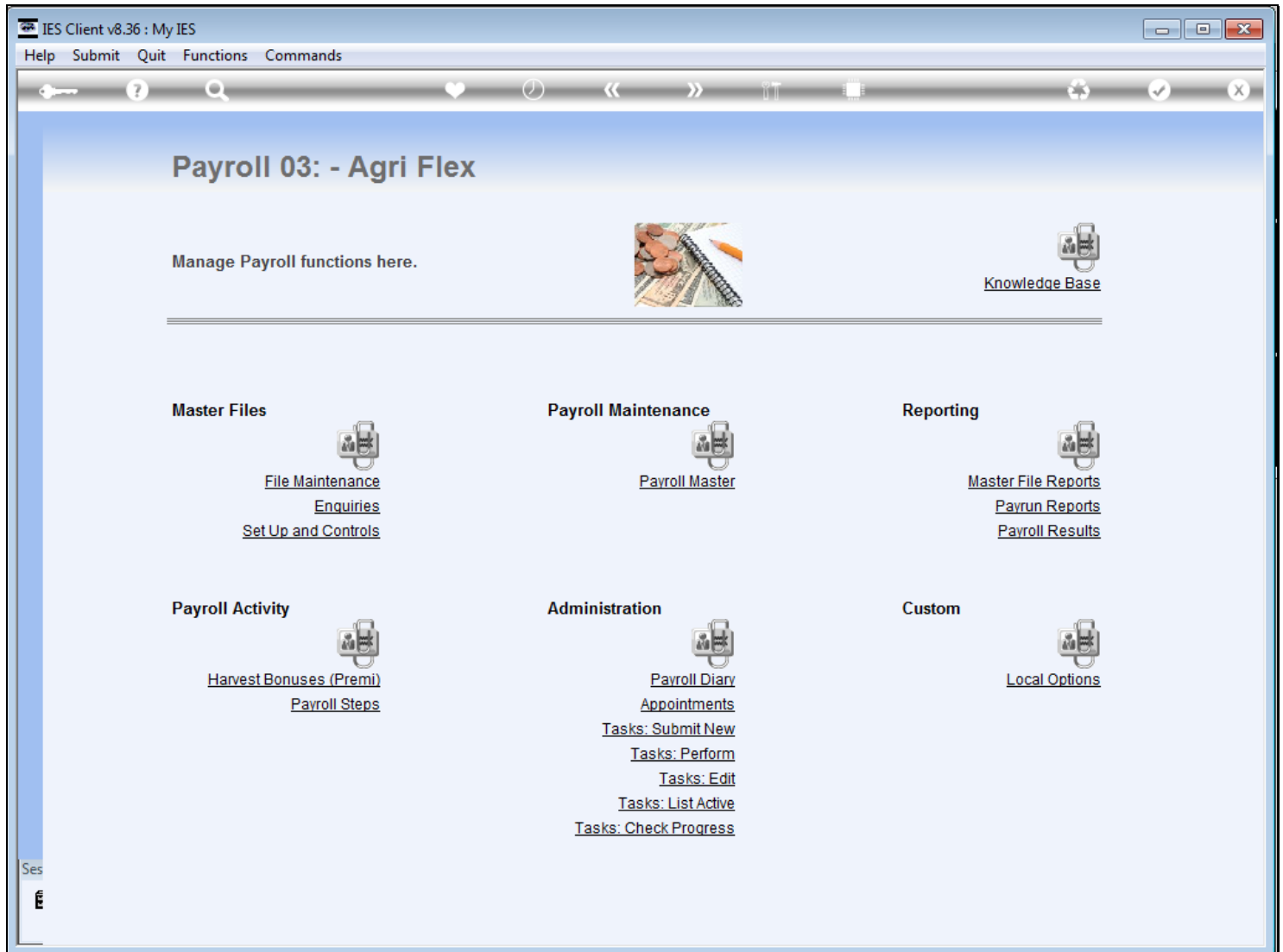
Slide 7 - Slide 7



Slide notes

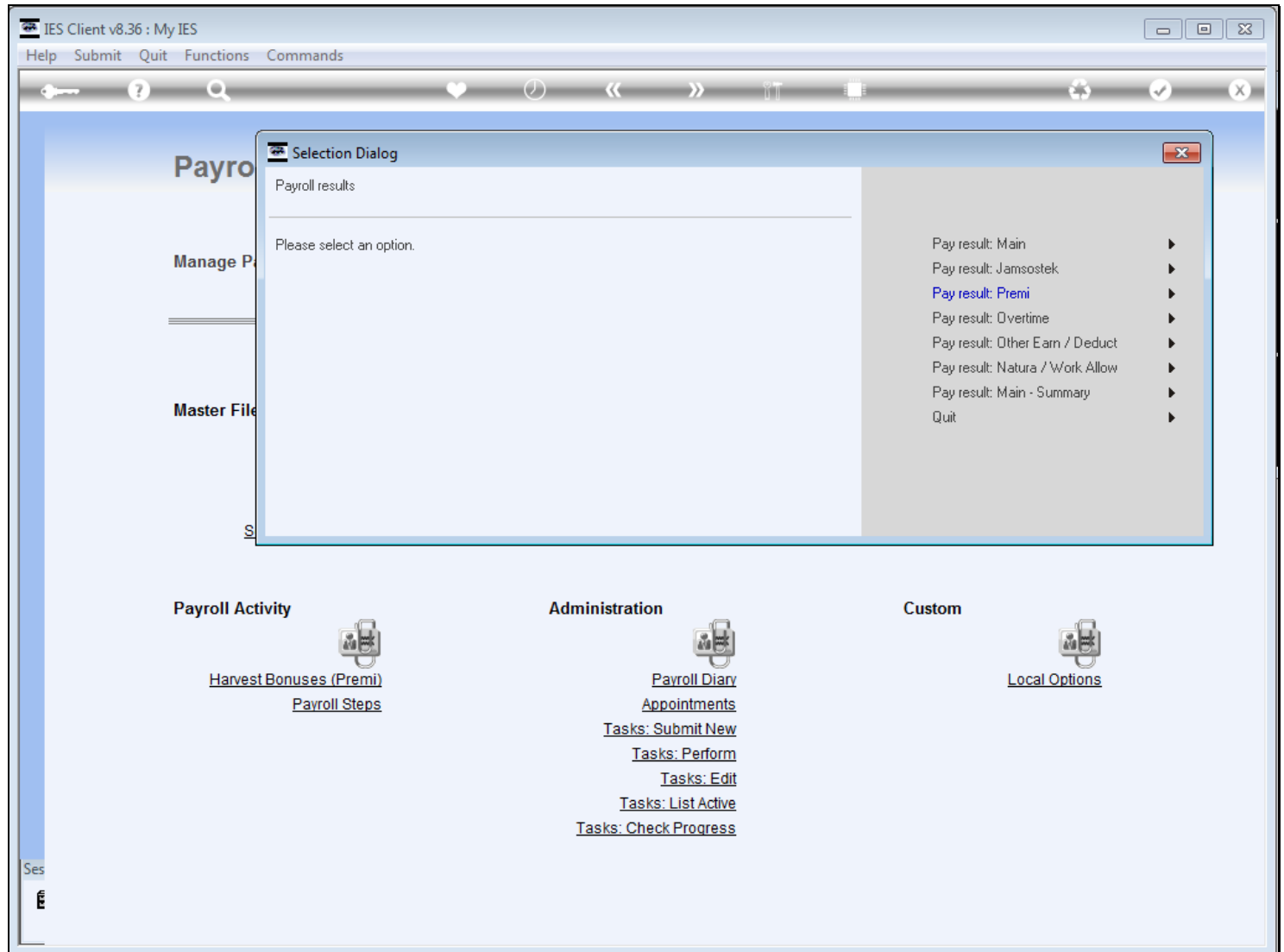
At Payrun Reports, we have the Payslips and the Pay Schedule.

Slide 8 - Slide 8



Slide notes

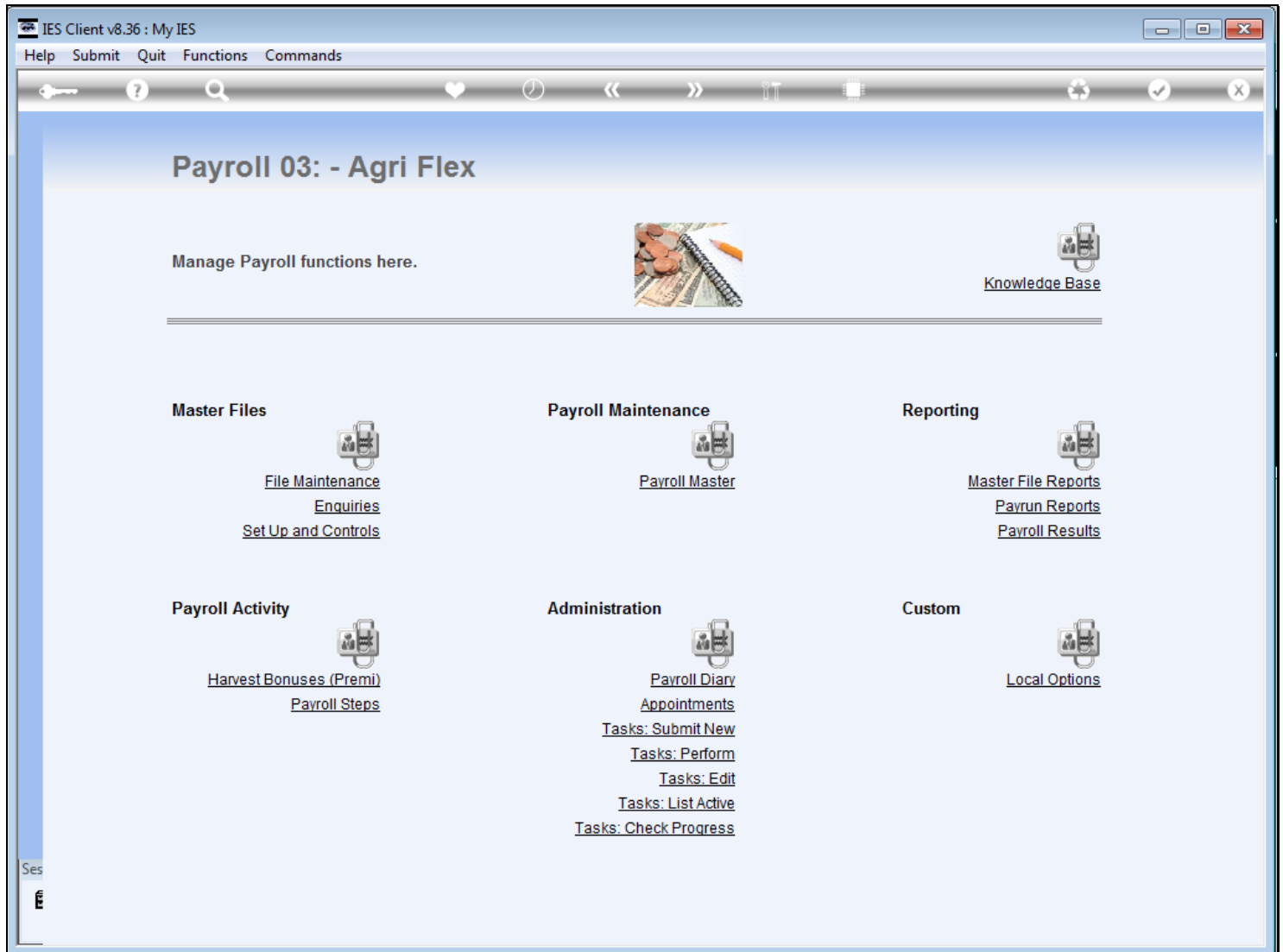
Slide 9 - Slide 9



Slide notes

And at the Payroll Results Reports we have a number of schedules on the Pay Result.

Slide 10 - Slide 10



Slide notes