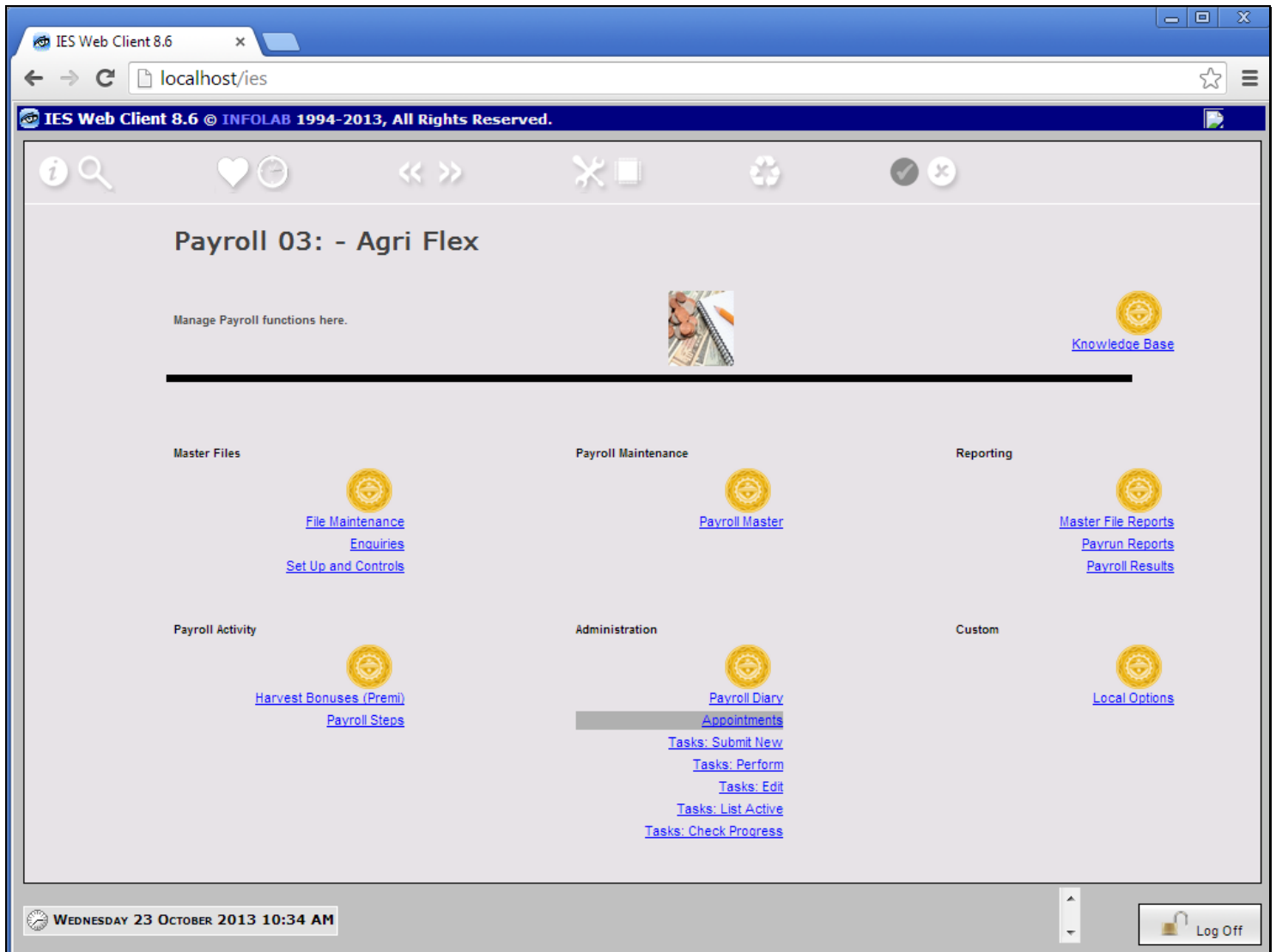


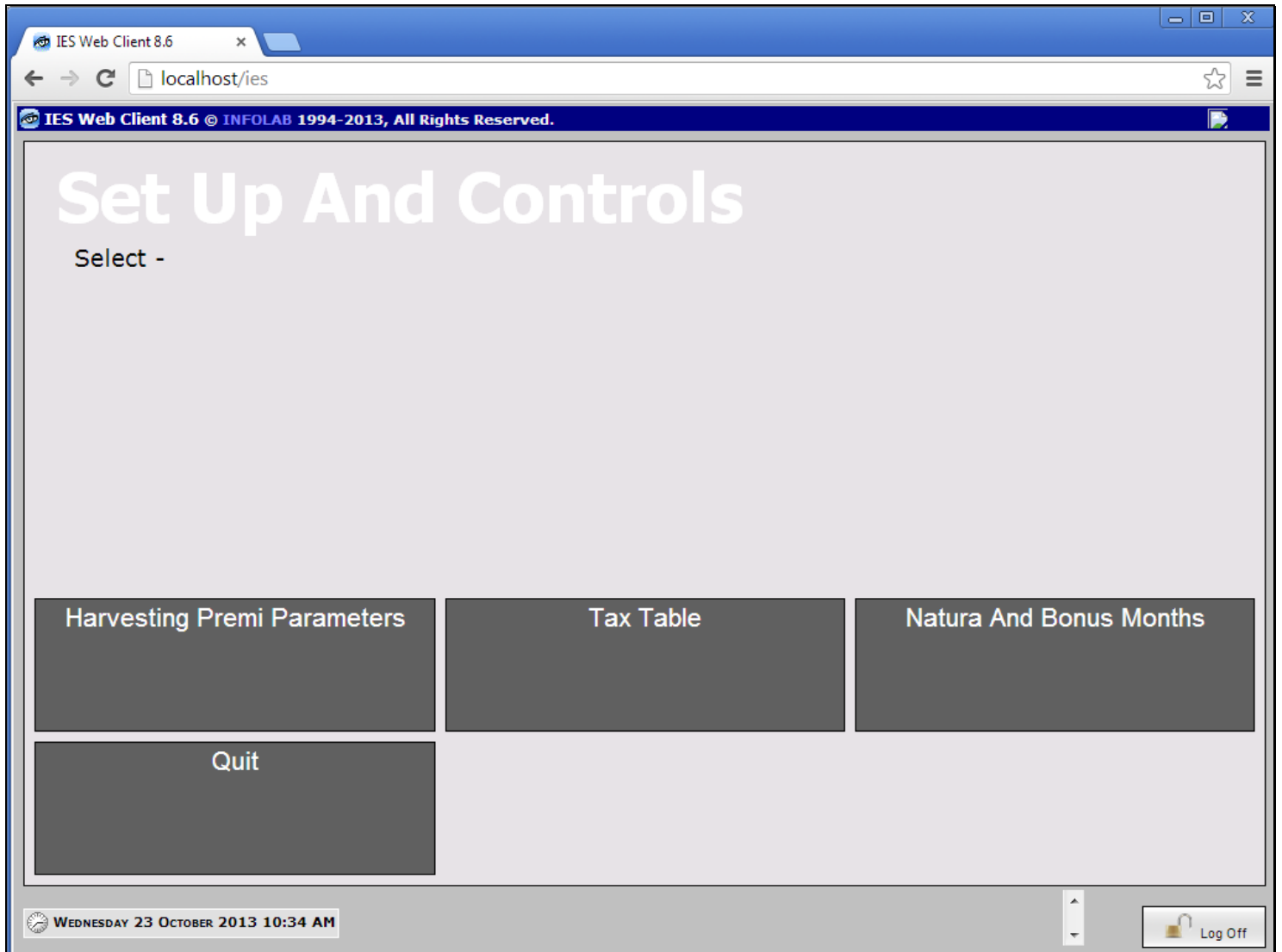
Slide 1 - Slide 1



Slide notes

Harvest Premi may or may not be used with this Payroll. If it is, then it is necessary to set up the parameters for Harvest Premi.

Slide 2 - Slide 2



Slide notes

Slide 3 - Slide 3

The screenshot shows a web browser window titled 'IES Web Client 8.6' with the address bar at 'localhost/ies'. The page header reads 'IES Web Client 8.6 © INFOLAB 1994-2013, All Rights Reserved.' The main content area is titled 'Harvesting Premi Parameters - Agri Flex' and includes a 'Save' and 'Quit' link in the top right. The form is divided into three sections: 'DIRECT PREMI: - From Man Jnis Work Result', 'INDIRECT PREMI: - From Overall Division Day Result', and 'QUALIFYING ACTIVITIES: - Harvesting Activities that attract Premi'. The 'DIRECT PREMI' section contains input fields for 'Komidal (Kg)' (value: 10), 'Basis Borong' (value: 700.00), 'Premi Rate 1' (value: 30.00), 'Max KG Rate 1' (value: 300.00), and 'Premi Rate 2' (value: 40.00). The 'INDIRECT PREMI' section contains 'Group Premi %: Rate 1' (value: 150.00) and 'Group Premi %: Rate 2' (value: 125.00). The 'QUALIFYING ACTIVITIES' section features a table with one entry: '1 10 Harvesting'. The bottom of the page shows a timestamp 'WEDNESDAY 23 OCTOBER 2013 10:34 AM' and a 'Log Off' button.

Slide notes

Please see the help on each field to state the correct and required parameter.

Slide 4 - Slide 4

The screenshot shows a web browser window titled 'IES Web Client 8.6' with the address bar at 'localhost/ies'. The page header reads 'IES Web Client 8.6 © INFOLAB 1994-2013, All Rights Reserved.' The main content area is titled 'Harvesting Premi Parameters - Agri Flex' and includes a 'Save' and 'Quit' link in the top right. The form is divided into two main sections: 'DIRECT PREMI: - From Man Jnis Work Result' and 'INDIRECT PREMI: - From Overall Division Day Result'. The 'DIRECT PREMI' section contains input fields for 'Komidal (Kg)' (10.00), 'Basis Borong' (700.00), 'Premi Rate 1' (30.00), 'Max KG Rate 1' (300.00), and 'Premi Rate 2' (40.00). Below these are instructions: 'APPLY RATE 1 UP TO n KG' and 'THEREAFTER, USE RATE 2'. The 'INDIRECT PREMI' section contains input fields for 'Group Premi %: Rate 1' (150.00) and 'Group Premi %: Rate 2' (125.00). To the right, the 'QUALIFYING ACTIVITIES: - Harvesting Activities that attract Premi' section features a table titled 'Harvesting Activities' with one entry: '1:10 Harvesting'. Below the table are buttons for 'Next', 'Prev', 'Add', 'Ins', 'Ed', and 'Del'. The footer shows the date and time 'WEDNESDAY 23 OCTOBER 2013 10:34 AM' and a 'Log Off' button.

Slide notes

1 or more Activities may be listed as Harvesting Activities. Only the Activities from the Activity register that are listed here will be sensed for Harvest Premi calculation.