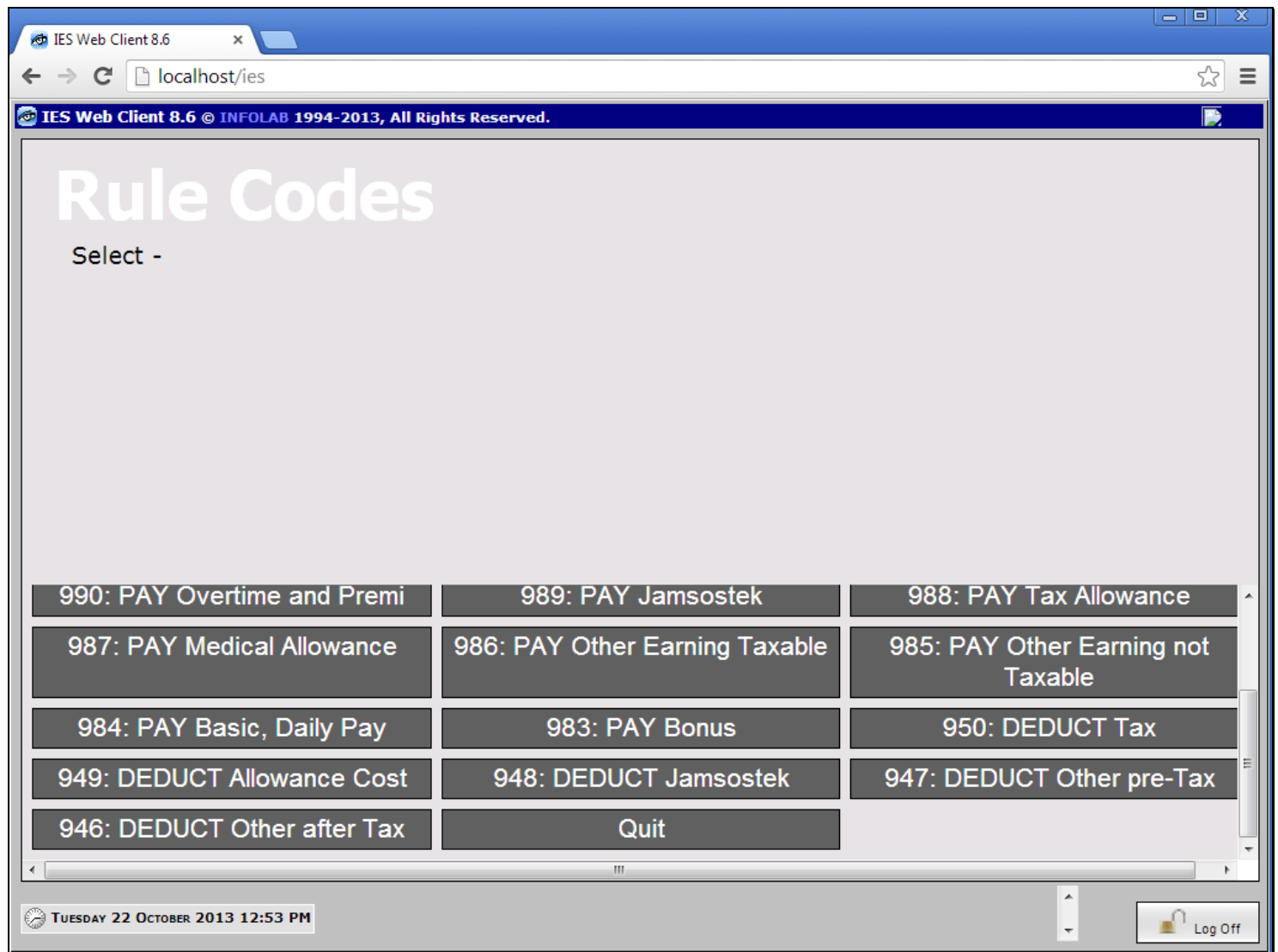


## Slide 1 - Slide 1



## Slide notes

Pay code 947 for Other Deduction pre-tax is a Secondary Deduction code that may be loaded directly onto the Employee Pay record when needed.

## Slide 2 - Slide 2

IES Web Client 8.6

localhost/ies

IES Web Client 8.6 © INFOLAB 1994-2013, All Rights Reserved.

## Agri Flex: Payroll Code 947

Name  [Quit](#)

**Rule Explanation**

Other Deduction Pre-Tax is deducted when code 947 is present on the Employee Pay record. The Amount to deduct is stated together with code 947 on the Pay record.

The Amount will be deducted from Gross Earnings before the Tax calculation on taxable Gross.

TUESDAY 22 OCTOBER 2013 12:53 PM

[Log Off](#)

## Slide notes

This pay code may be used for a once off or regular deduction, but it should be noted that it is an unusual deduction that escapes the Tax calculation, i.e. is deducted from Gross before Taxable Gross is determined.